


Nishi-Ogikubo: Tokyo's Best Antique District





Asakusa is to traditional atmosphere as
Nishi-Ogikubo is to antiques.

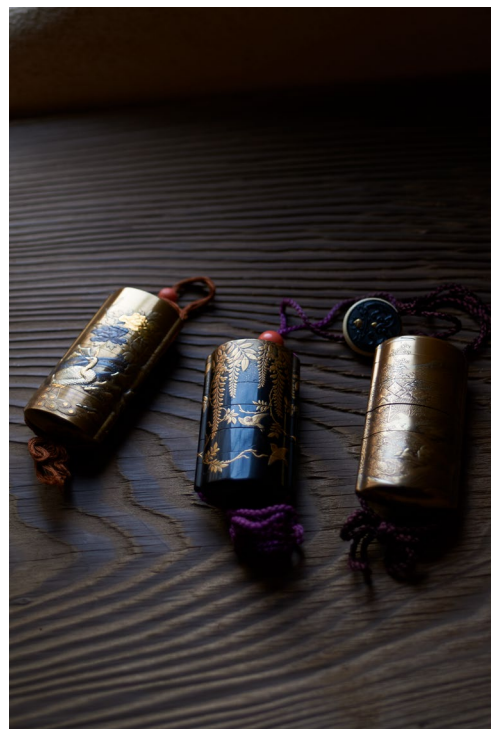
Nishi-Ogikubo, a Tokyo residential area with many privately owned shops snugly gathered, is just 12 minutes from Shinjuku by train via the JR Chuo Line (on weekdays; weekends and holidays requires local train use, 16 min.).

About 30–40 years ago antique shops began to steadily increase in the area. With its atmosphere of cherishing old things, antique shops increased naturally, and Nishi-Ogikubo became an antique town. In its heyday there were over 70 antique shops in the area.

Due to this historical backdrop, the antiques here come in numerous varieties, and you will not find another district in Japan with this many antique shops. That's why in Japan Nishi-Ogikubo is synonymous with antiques.



Antique Art



Tableware





Lifestyle Goods





Kimono (traditional Japanese garment)



Dolls/ Toys

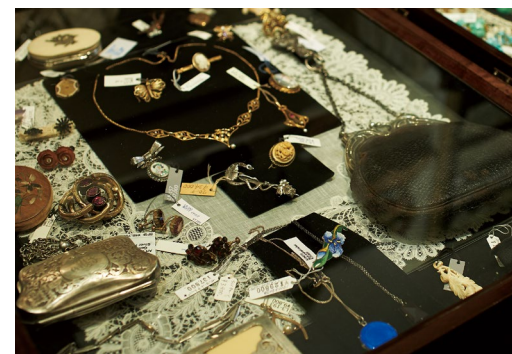




Fixtures



Used Books and Others



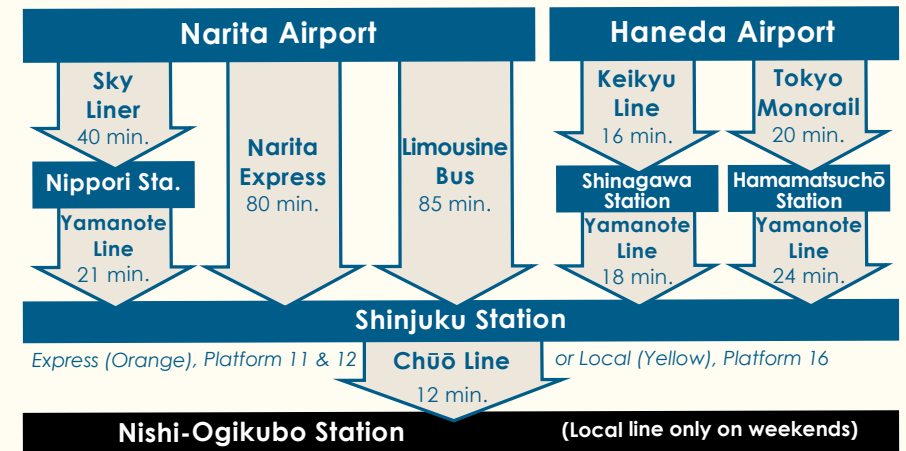
Shoplist

*All adresses are in Suginami, Tokyo.

Japanese	Name	Genre	Adress	Open	Closed
① ヤナギヴィンテージ	Yanagi Vintage	Vintage lady's clothing & accessories, etc.	2 Chome-2-17 Nishiogi-kita	13:00–17:00 (Sat), 13:00–18:00 (Sun)	Mon-Fri
② ギャラリー金子	Gallery Kaneko	Indonesian ancient art & ancient ceramics gallery	3 Chome-43-13 Nishiogi-kita	13:00–19:00	Mon, Tue
③ カルベディエム	Carpe Diem	Antiques, interior & exterior goods	3 Chome-42-1 Nishiogi-kita	12:00–19:00	Mon, Tue
④ ステキ	Suteki	Toys	2 Chome-27-10 Nishiogi-kita	20:00– (weekdays), 14:00– (weekends & holidays)	
⑤ ルーベ	Loupe	Housewares & antique crafts	3 Chome-45-8-1-A Nishiogi-kita	12:00–19:00, Irregular hours on Mon. & holidays	Tue, Sun
⑥ 魯山	Rozan	Old & modern ceramics, pottery	3 Chome-45-8 Nishiogi-kita	11:00–19:00	Tue
⑦ ブルミエール	Premiere	Antique dolls, stuffed animals, etc.	5 Chome-7-2 Nishiogi-kita	12:00–18:30	Mon
⑧ 凡美堂	Bonbido	Japanese vintage accessories	5 Chome-26-11 Nishiogi-kita	12:00–18:00	Irregular
⑨ リサイクル着物・菅野	Kanno Recycle Kimono	Used kimono & recycle clothing	3 Chome-2-8 Nishiogi-kita	12:00–19:00	Mon, 3rd or 4th Tue
⑩ ケイ アンド ワイ	K & Y	Japanese lamps & glass	3 Chome-29-12 Nishiogi-kita	11:00–19:00	Tue, Wed, Thu
⑪ 陣屋	Jinya	Antique art	3 Chome-3-6 Nishiogi-kita	14:00–19:00	Tue, Wed
⑫ 眞泉堂	Shinsen-do	New & antique tea utensils	3 Chome-8-11 Nishiogi-kita	11:00–19:00	Sun, Mon (& Irregularly)
⑬ レ・ジュウノア	Les Yeux Noirs	Antique tableware	4 Chome-1-22 Nishiogi-kita	11:30–18:30	Irregular
⑭ 木土藍楽	Kidoairaku	Japanese chest, woodcut prints, antiques, etc.	4 Chome-5-28 Nishiogi-kita	12:00–19:00	
⑮ 古美術 砧	Kinuta Antique Art	Antique art & folk crafts	4 Chome-4-4 Nishiogi-kita	12:30–19:00	Tue
⑯ とりとり	Tori Tori	Glass, dolls, toys, kimono & old fabric	4 Chome-5-24 Nishiogi-kita	12:00–18:00	Irregular
⑰ ギャラリー壽庵	Gallery Juan	Painting, tea utensils, gold lacquer, prints & more	4 Chome-5-22 Nishiogi-kita	10:00–19:00	Sun
⑱ 伊勢屋美術	Iseya Art	Painting, tea utensils, gold lacquer, prints & more	4 Chome-5-22 Nishiogi-kita	10:00–19:00	Sun
⑲ 慶屋	Kimono-kan Yoshiya	Used kimono, recycle cloth & antiques	4 Chome-8-2 Nishiogi-kita	12:00–19:00	Tue
⑳ 仙遊洞	Senyudo	Antique art	4 Chome-10-3 Nishiogi-kita	13:00–19:00	
㉑ 道具屋 慈光	Antiques Jikoh	Antique furniture & art crafts	4 Chome-8-8 Nishiogi-kita	10:00–18:00	Wed
㉒ ノースウェストアンティークス	Northwest Antiques	Antique furniture & variety goods	4 Chome-18-6 Nishiogi-kita	11:00–18:00	Wed
㉓ 田螺堂	Tanishidou	Antiques & vintage clothing	4 Chome-18-8 Nishiogi-kita	12:00–18:00	Wed (& Irregularly)
㉔ フィールアットホーム	Feel at Home	Antiques & select goods	4 Chome-35-6 Nishiogi-kita	14:00–18:00	Irregular
㉕ 駱駝	Rakuda	Japanese glass, vintage furniture, lighting, etc.	4 Chome-35-8 Nishiogi-kita	12:00–19:00	Wed
㉖ 阿吽	Aun	Paintings, calligraphy, antique goods	2 Chome-2-1 Zenpuku-ji	12:00–19:00	Irregular
㉗ ファンレコード	Fun Records	Used CD's & records	3 Chome-15-13 Nishiogi-minami	11:00–20:00	Irregular
㉘ ラ・カージュ	La Cage	Antique costumes, jewelry & glassware	3 Chome-17-6 Nishiogi-minami	11:00–19:00	
㉙ サウスアベニュー	South Ave.	Organic jasmine tea, lifestyle goods, & clothing	3 Chome-22-6 Nishiogi-minami	14:00–20:00	Thu (& Irregularly)
㉚ メルシ サン フォア	Merci Cent Foix	Western antiques, vintage jewelry, accessories, clothing	3 Chome-21-8 Nishiogi-minami	12:00–20:00	Mon,Tue (& Irregularly)
㉛ テレビジョンエイジ	Television Age	Wide range of antiques from the “TV era”	3 Chome-18-4-2F Nishiogi-minami	12:00–19:30	Wed
㉜ グレープ 一期一会	Grape (chance encounter)	Select recycle kimono & various Japanese goods	3 Chome-18-3 Nishiogi-minami	12:00–19:00	Mon
㉝ コレクションズ	Collection's	Antique lighting, glassware, ceramics, jewelry, etc.	2 Chome-29-18 Nishiogi-minami	11:00–21:00	Irregular
㉞ アンタイディー	Untidy	Art & antiques	2 Chome-29-17, Nishiogi-minami	12:00–19:00	Mon, Tue
㉟ グレープ 青い葡萄	Grape (green grapes)	Current & old recycle kimono, various Japanese goods	2 Chome-29-15 Nishiogi-minami	12:00–19:00	Mon
㊱ アンティーク岩崎	Antiques Iwasaki	Western antique glass & pottery	2 Chome-27-10 Nishiogi-minami		Irregular
㊲ アンティーク時	Antique Toki	Old clocks & various retro goods	2 Chome-24-7 Nishiogi-minami	11:00–19:00	Wed
㊳ ギャラリーボウノット	Gallery Bowknot	Antique lace, vintage accessories, clothing	3 Chome-37-21 Shoan	12:00–19:00	Mon, Tue
㊴ ひぐらし古具店	Higurashi Antiques	Café style furniture & general goods	3 Chome-37-21 Shoan	12:30–19:00	Mon, Tue, Wed
㊵ こたつむり デザイン	Kotatsumuri Design	Scandinavian vintage houseware, glass accessories, woodwork	3 Chome-37-21 Shoan	14:00–18:00 (weekends), by appointment (weekdays)	
㊶ リサイクル庵亭空	Recycle Antique (Asada)	Necessities & cheap goods	2 Chome-19-7 Nishiogi-minami	11:00–17:30	
㊷ とらいふる	Trifle	Antique clocks, watches, goods, antique clock repair	3 Chome-31-16-101 Shoan	14:00–19:00 (weekdays), 12:00–19:00 (weekends & holidays)	Irregular
㊸ ビストロ大黒天	Bistro Daikokuten	Antiques & restaurant	3 Chome-1-12 Shoan		
㊹ センチュリーハウス	Century House	Western vintage goods including lighting, jewelry, ceramics	2 Chome-8-18 Shoan	11:00–20:00	Irregular
Ⓐ 中野書店	Nakano Bookstore	Used books	5 Chome-9-12 Nishiogi-kita	12:00–18:00	Sun, Mon, holidays
Ⓑ 古書 音羽館	Otowakan	Used books	3 Chome-13-7 Nishiogi-kita	12:00–23:00	Tue
Ⓒ 古書 花鳥風月	Kachofugetsu	Used books	4 Chome-3-2 Nishiogi-kita	12:00–20:00	Thu
Ⓓ 盛林堂書房	Seirindou Bookstore	Used books	2 Chome-23-12 Nishiogi-minami	11:00–18:30	Mon
Ⓔ 月よみ堂	Tsukiyomidou	Used books, alcohol, coffee	2 Chome-6-4 Nishiogi-minami	14:00–24:00	Irregular



Access to Nishi-Ogikubo



Important

- There are many small shops with fragile items. Please be sure to hold your backpacks etc. so as not break any items accidentally.
- Certain items in shops may be very old and valuable, so if you want to touch them or have a closer look please be sure to communicate with shop staff first.
- Though some shops may accept credit cards, please be aware that others will not. If you plan to make a purchase please prepare cash in advance.

Planning: Nishi-Ogikubo Antique Map Production Committee

Planning, Editing, Publishing: Chuosen Aruaru Project Executive Committee

(Office: Suginami Industry Promotion Center, Sightseeing Office)

Title Calligraphy: Nobuyoshi Araki

Photography: Ryunosuke Hanada

Design: Yasuo Totsuka

The Chuosen Aruaru project aims to give useful sightseeing information regarding food, culture, and more based in Suginami, Tokyo on the JR Chuo Line.

* Photos and maps are for illustration purposes only.

* Shop business hours, days off, etc. are subject to change, so please confirm before going.

* Info published here is accurate as of February, 2018.

Please note that things may change without notice.

* Transportation Guidance shows only main routes, and travel time is provided for reference only.